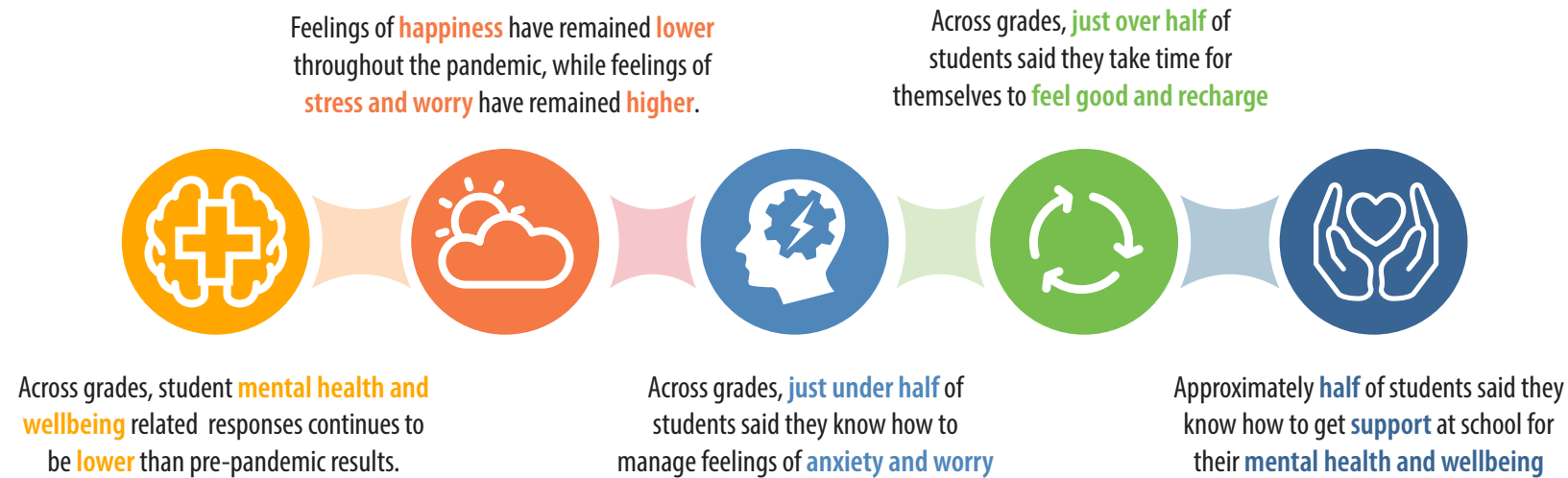


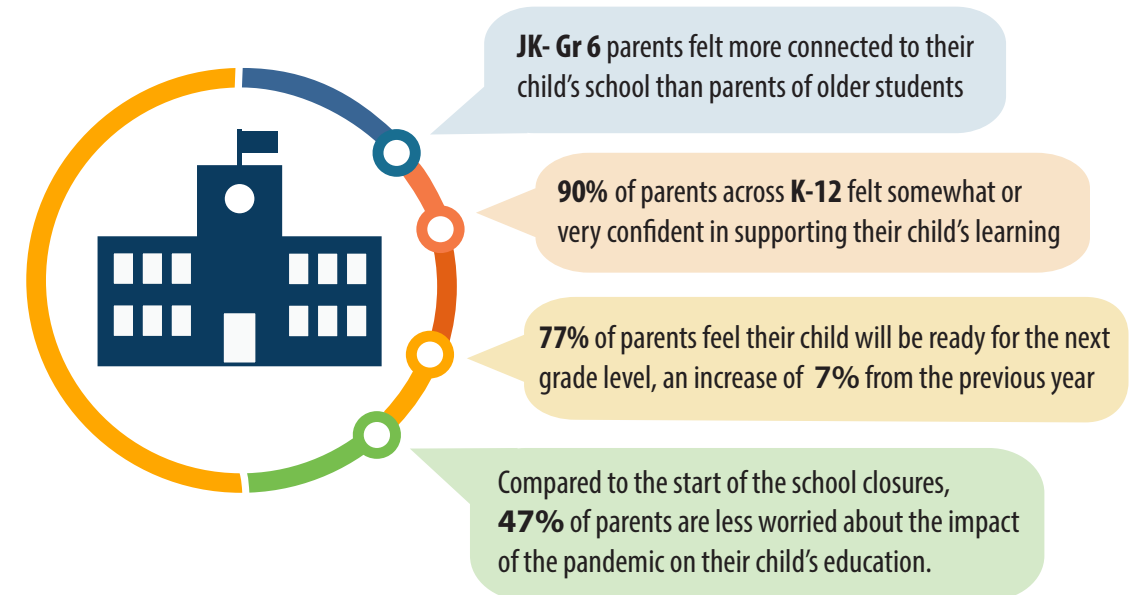
# Checking-in with Students and Families

## - SPRING 2022 SURVEYS -

### STUDENT MENTAL HEALTH AND WELLBEING:

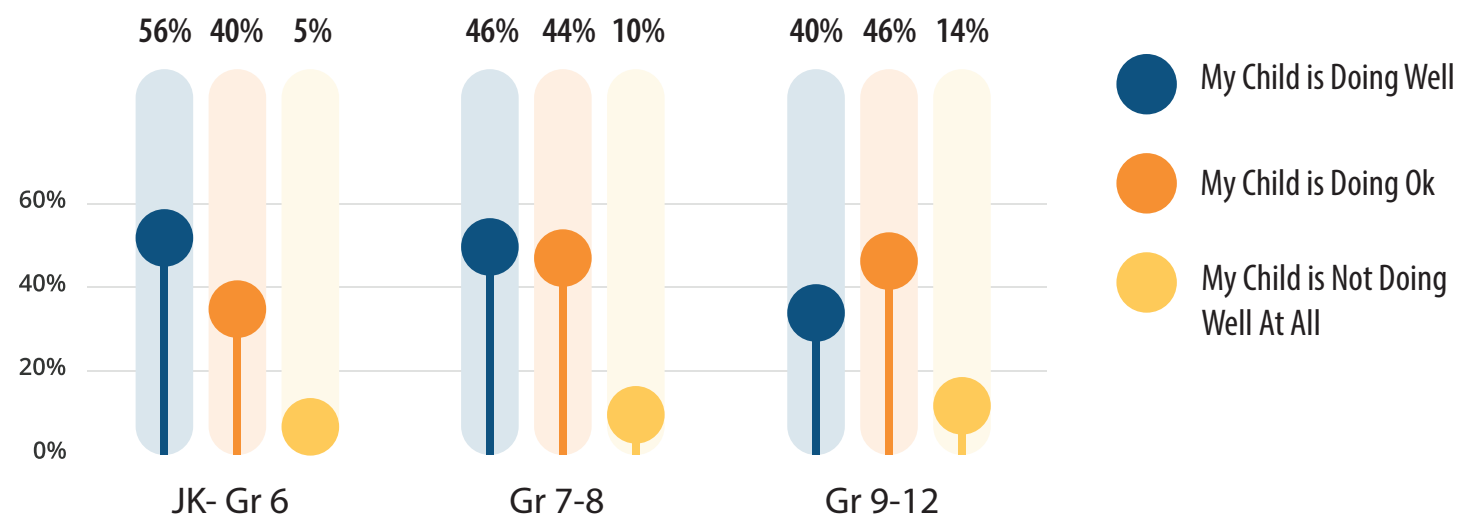


### PARENTS - CONNECTION TO LEARNING:



### PARENTS – STUDENT MENTAL HEALTH AND WELLBEING:

Parents of younger students (JK- Gr 6) were more likely to say their child was doing well than parents of older students; 14% of parents of Gr 9-12 students said their child was not doing well at all



### STUDENT BELONGING AND ENGAGEMENT:

