

Playground Erosion Improvements

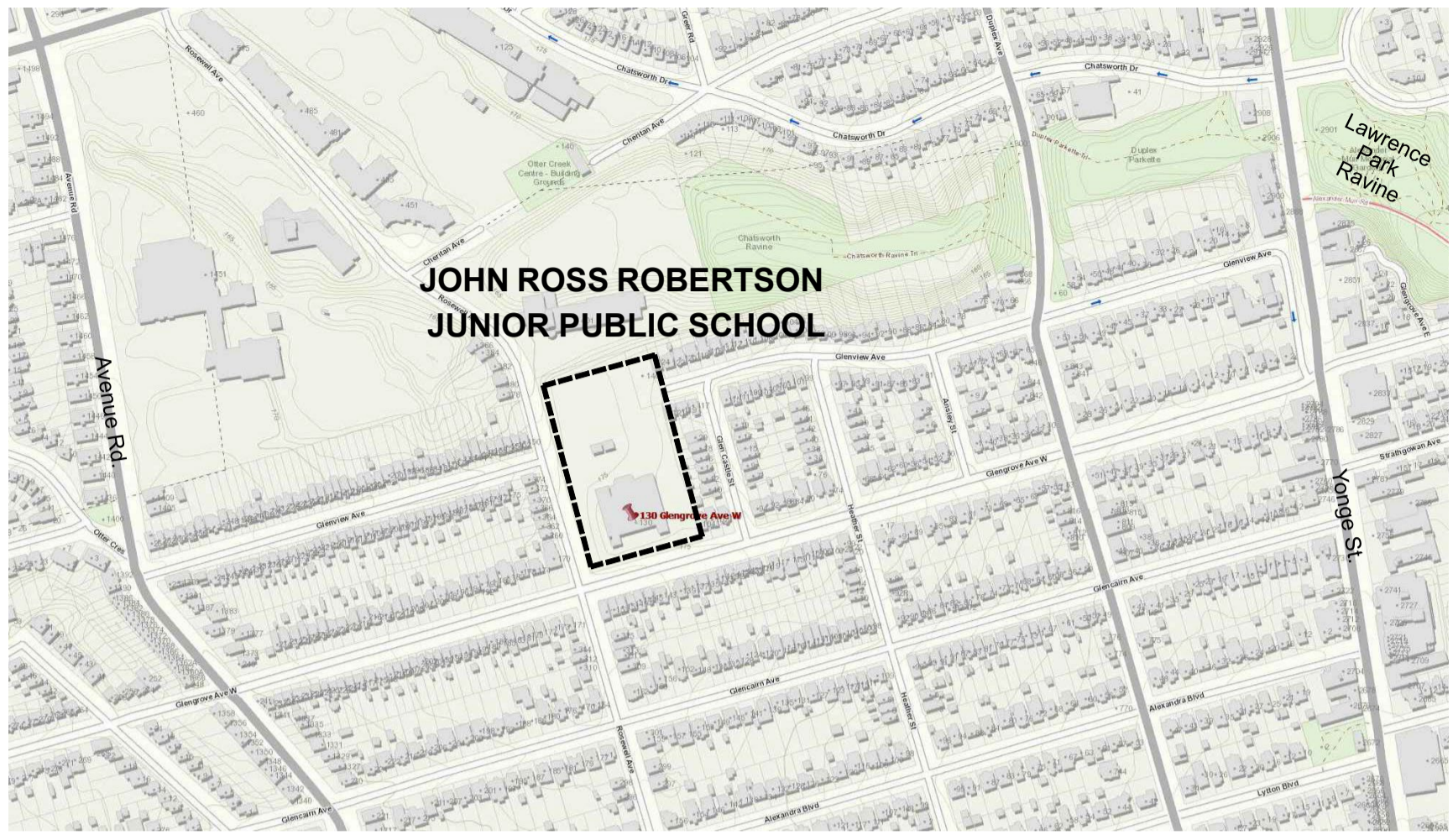
**JOHN ROSS
ROBERTSON JUNIOR
PUBLIC SCHOOL**

located at 130 Glengrove Ave W, Toronto, ON M4R 1P2
TDSB PROJECT TR-18-0728
Change Order 1 (DRAFT) - February 17, 2021

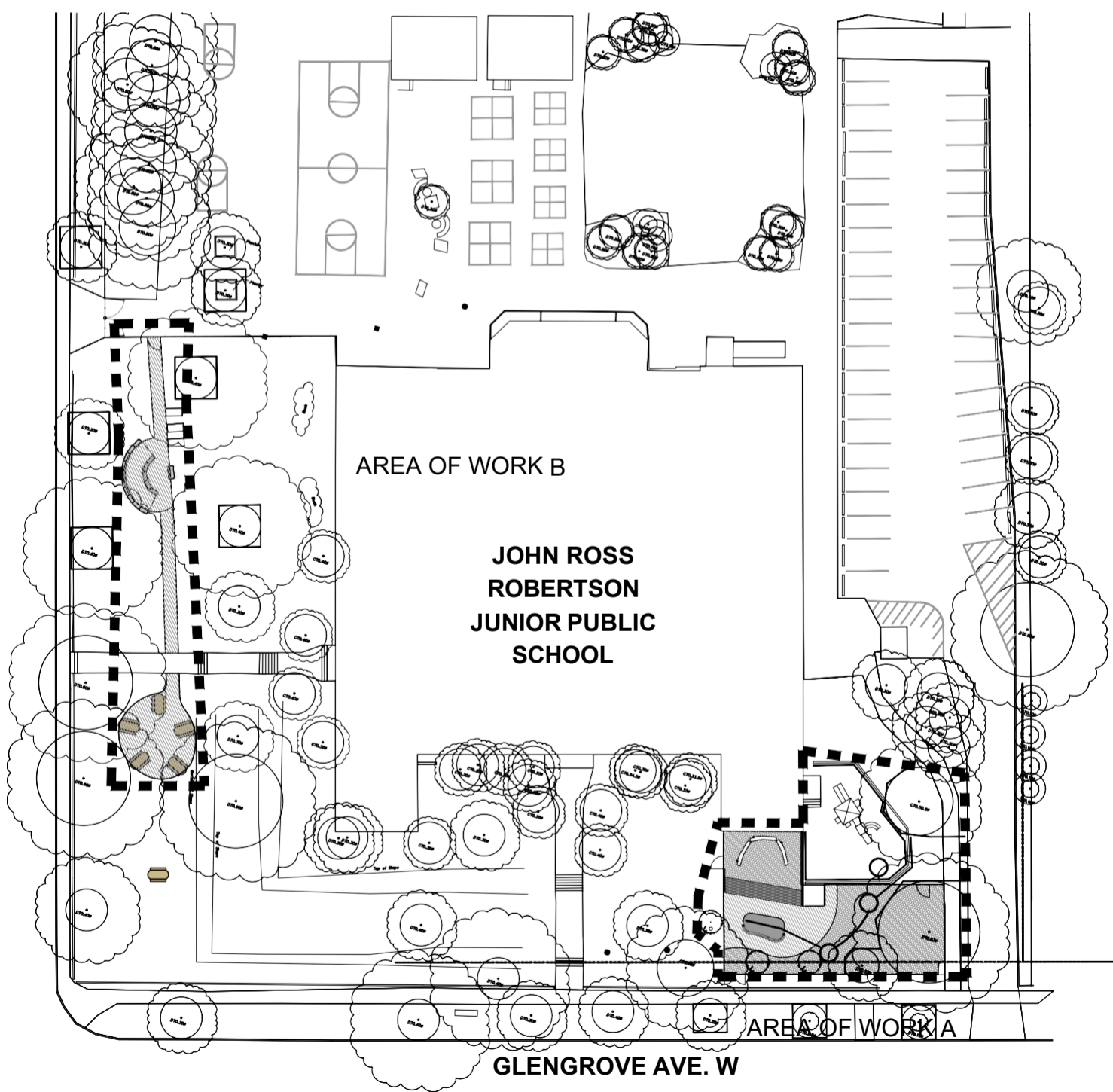
Landscape Architect:
Forest and Field Landscape Architecture Inc.

Ontario Land Surveyor:
Frontop Surveying Inc. Ontario Land Surveyors

Arborist:
Bright Leaf Ltd.



CONTEXT MAP



**KEY PLAN
1:400**

DRAWING INDEX

L0.0	COVER SHEET
L1.0 A	EXISTING CONDITIONS & REMOVALS PLAN
L2.0 A	MATERIALS & PLANTING PLAN
L2.1 A	LAYOUT PLAN
L2.2 A	GRADING PLAN
L1.0 B	EXISTING CONDITIONS & REMOVALS PLAN
L2.0 B	MATERIALS & PLANTING PLAN
L2.1 B	LAYOUT PLAN
L2.2 B	GRADING PLAN
L3.0	SECTION & DETAILS
L3.1	DETAILS
L3.2	SECTION & DETAILS
L3.3	DETAILS



**Forest and Field
Landscape Architecture**

1 647 933 1152
info@forestandfield.ca

Forest and Field Landscape Architecture

1 647 933 1152
info@forestandfield.ca

GENERAL NOTES:

- ALL WORKS SHALL CONFORM TO THE REQUIREMENTS, STANDARDS, AND DIRECTION OF THE TORONTO DISTRICT SCHOOL BOARD.
- THE CONTRACTOR SHALL CONTACT THE LANDSCAPE ARCHITECT TO OBTAIN THE TORONTO DISTRICT SCHOOL BOARD'S APPROVAL ON ANY PROPOSED SUBSTITUTIONS IN MATERIALS, OR DEVIANCES FROM CONSTRUCTION METHODS, AS DESCRIBED ON THE DRAWINGS AND SPECIFICATIONS. THE TORONTO DISTRICT SCHOOL BOARD MAY NOT APPROVE SUBSTITUTIONS OR ALTERNATE METHODS. THE CONTRACTOR IS RESPONSIBLE FOR ENSURING COMPLIANCE WITH DRAWINGS AND SPECIFICATIONS WHICH MAY INCLUDE REMOVAL OF ANY WORK NOT APPROVED BY THE TORONTO DISTRICT SCHOOL BOARD.
- THE CONTRACTOR SHALL IMMEDIATELY NOTIFY THE LANDSCAPE ARCHITECT OF ANY DISCREPANCIES BETWEEN THE DRAWINGS AND THE CONDITIONS ENCOUNTERED ON-SITE.
- THE CONTRACTOR SHALL STAKE OR SPRAY PAINT ALIGNMENT OR LOCATION OF ALL NEW FACILITIES PRIOR TO CARRYING OUT ANY EXCAVATIONS OR INSTALLATIONS, FOR VERIFICATION BY THE LANDSCAPE ARCHITECT.
- THE CONTRACTOR SHALL PROTECT FROM DAMAGE ALL TREES OR PROPERTY ON TORONTO DISTRICT SCHOOL BOARD PROPERTY OR ON ADJACENT PROPERTIES, NOT INDICATED TO BE REMOVED. ANY DAMAGE SHALL BE IMMEDIATELY REPAIRED TO THE BOARD'S SATISFACTION.
- ANY ENVIRONMENTAL PROTECTION AND/OR MITIGATION WORKS THAT MAY BE REQUIRED IN ADDITION TO THOSE SET OUT IN THESE DOCUMENTS SHALL BE INSTALLED AS SOON AS POSSIBLE UPON APPROVAL OF THE TORONTO DISTRICT SCHOOL BOARD.
- THE CONTRACTOR SHALL KEEP ALL CONSTRUCTION RELATED ACCESS AND ACTIVITIES WITHIN THE DESIGNATED "LIMIT OF WORK AREA."
- ALL PORTIONS OF THE WORK MUST BE AVAILABLE AT ALL TIMES WHILE WORK IS BEING PERFORMED, FOR INSPECTION BY DESIGNATED REPRESENTATIVES OF THE TORONTO DISTRICT SCHOOL BOARD AND/OR THE LANDSCAPE ARCHITECT.
- ALL QUESTIONS, ALTERNATE PROPOSALS, REQUESTS FOR INFORMATION OR INSPECTION, ETC. SHALL BE DIRECTED TO THE LANDSCAPE ARCHITECT.
- EMERGENCY CONTACT INFORMATION FOR THE TORONTO DISTRICT SCHOOL BOARD WILL BE PROVIDED TO THE CONTRACTOR PRIOR TO CONSTRUCTION START-UP.

No.	Issued Description	YYYY-MM-DD
01	Issued for Review	2019-12-05
02	Issued for Draft Tender	2019-01-07
03	Issued for Tender	2019-01-29
04	Issued for Construction	2020-09-15
05	Change Order 01 (DRAFT)	2020-12-22
06	Change Order 01 (DRAFT)	2021-02-17

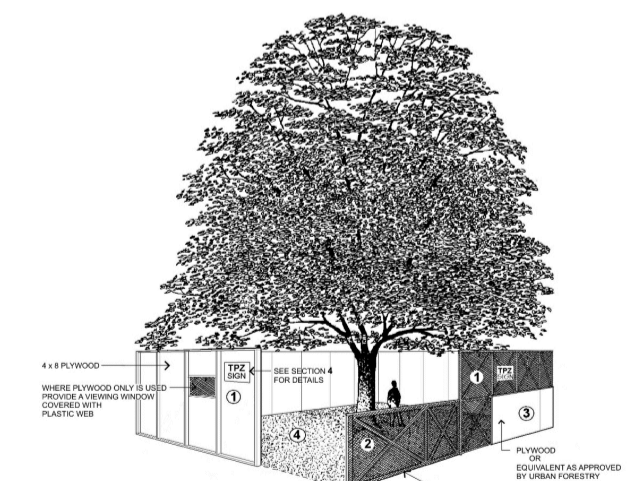
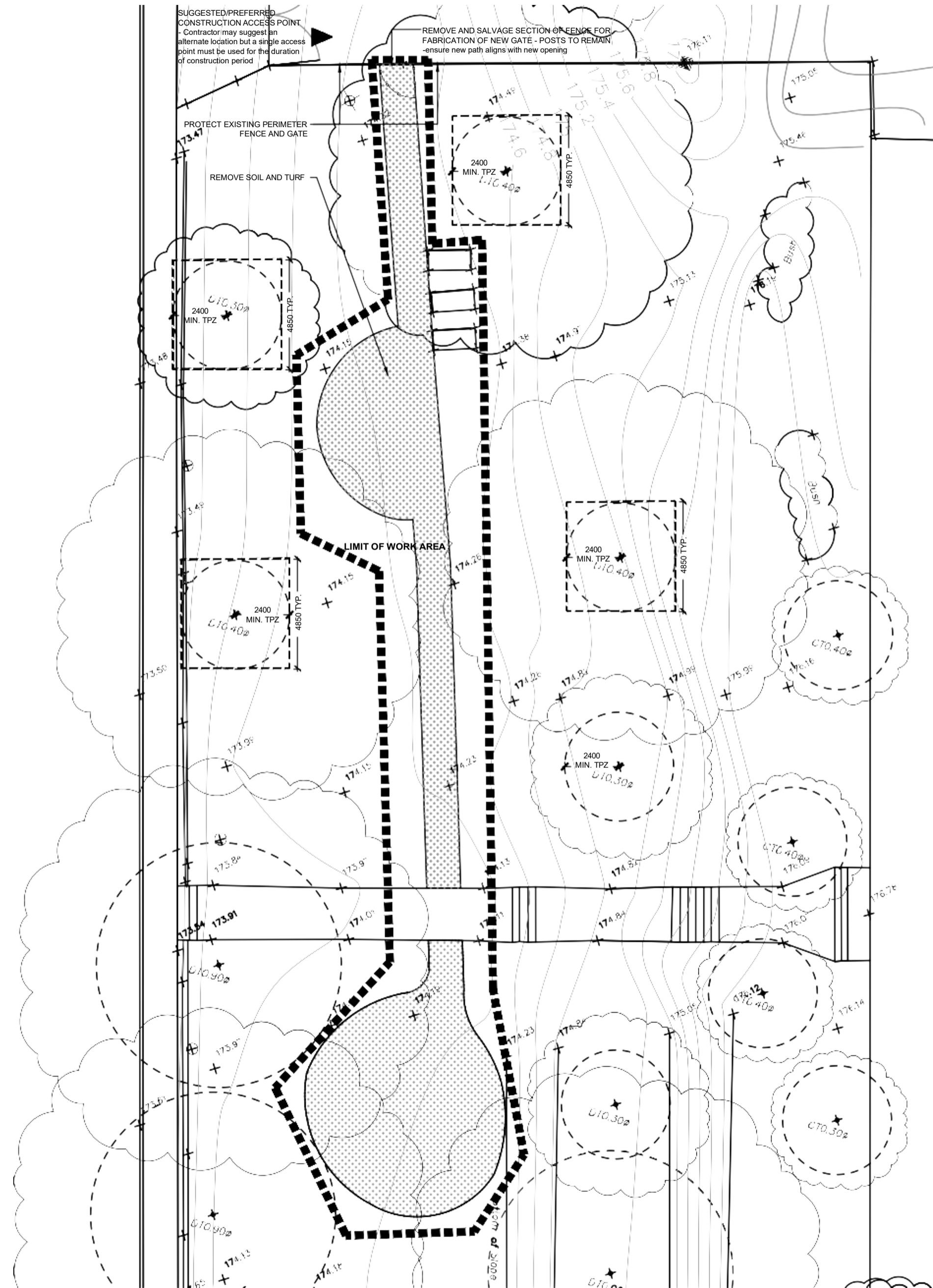


SURVEY NOTES

- THIS IS NOT A PLAN OF SURVEY AND SHALL NOT BE USED FOR MORTGAGE OR TRANSACTION PURPOSES. BOUNDARY INFORMATION SHOWN HEREON HAS BEEN COMPILED FROM EXISTING SURVEY RECORDS.
- THIS SKETCH TO ILLUSTRATE TOPOGRAPHIC DETAIL FOR CONSTRUCTION PURPOSE OF 130 GLENGROVE AVENUE WEST, CITY OF TORONTO.
- ELEVATIONS SHOWN HEREON ARE IN METERS AND ARE RELATED TO THE CITY OF TORONTO STATION 022741860 WITH THE PUBLISHED ELEVATION VALUE OF 176.436 METRES.
- TOPOGRAPHIC OBSERVATIONS SHOWN HEREON WERE COMPLETED ON SEPTEMBER 8, 2017 BY FRONTOP SURVEYING INC. ON BEHALF OF THE TDSB.
- UNDERGROUND SERVICE/UTILITY LOCATIONS WERE NOT DETERMINED IN THE FIELD. UTILITIES MUST BE LOCATED IN THE FIELD PRIOR TO CONSTRUCTION.
- IT IS THE RESPONSIBILITY OF THE CONTRACTOR TO VERIFY THAT THE LOCAL BENCHMARKS HAVE NOT BEEN ALTERED OR DISTURBED AND THAT THE RELATIVE ELEVATIONS AND DESCRIPTIONS AGREE WITH THE INFORMATION SHOWN ON THIS SKETCH.

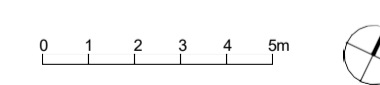
REMOVALS LEGEND

- WOODEN RETAINING WALL TO BE REMOVED
- SOIL TO BE REMOVED
- FENCING TO BE REMOVED
- FENCING TO BE PROTECTED
- EXISTING ELEVATION
- EXISTING DECIDUOUS TREES TO BE PROTECTED WITH MINIMUM CITY OF TORONTO TREE PROTECTION ZONE
- TREE PROTECTION FENCING (CITY OF TORONTO STANDARD)
- 2400mm HIGH CONSTRUCTION FENCING AT LIMIT OF WORK
- PROPERTY BOUNDARY



- Tree Protection Barriers**
- Tree protection barriers must be constructed with a solid wood frame clad with plywood or approved equivalent. Height of hoarding may be less than 8 ft. to accommodate any branches that may be lower.
 - Tree protection barriers for trees situated on the City road allowance where visibility must be maintained can be 1.2m (4ft.) high and consist of orange plastic web snow fencing on a wood frame made of 2 x 4s.
 - Where some excavate or fill has to be temporarily located near a tree protection barrier, plywood must be used to ensure no material enters the Tree Protection Zone.
 - No construction activity, grade changes, surface treatment or excavations of any kind is permitted within the Tree Protection Zone.
- Note:
Sediment control fencing shall be installed in locations indicated in an Urban Forestry approved Tree Protection Plan. The sediment control fencing must be installed to Ontario Provincial Standards (OPS-219-120) heavy duty silt fence barrier and to the satisfaction of Urban Forestry. See Detail TP-2.

Project Location:
TDSB PROJECT TR-18-0728
JOHN ROSS ROBERTSON
JUNIOR PUBLIC SCHOOL
130 Glengrove Ave West
Toronto, Ontario, M4R 1P2



Sheet Title: EXISTING CONDITIONS & REMOVALS PLAN

Scale 1:100
Sheet Number: **L1.0 B**



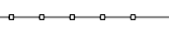


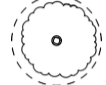


GENERAL NOTES:

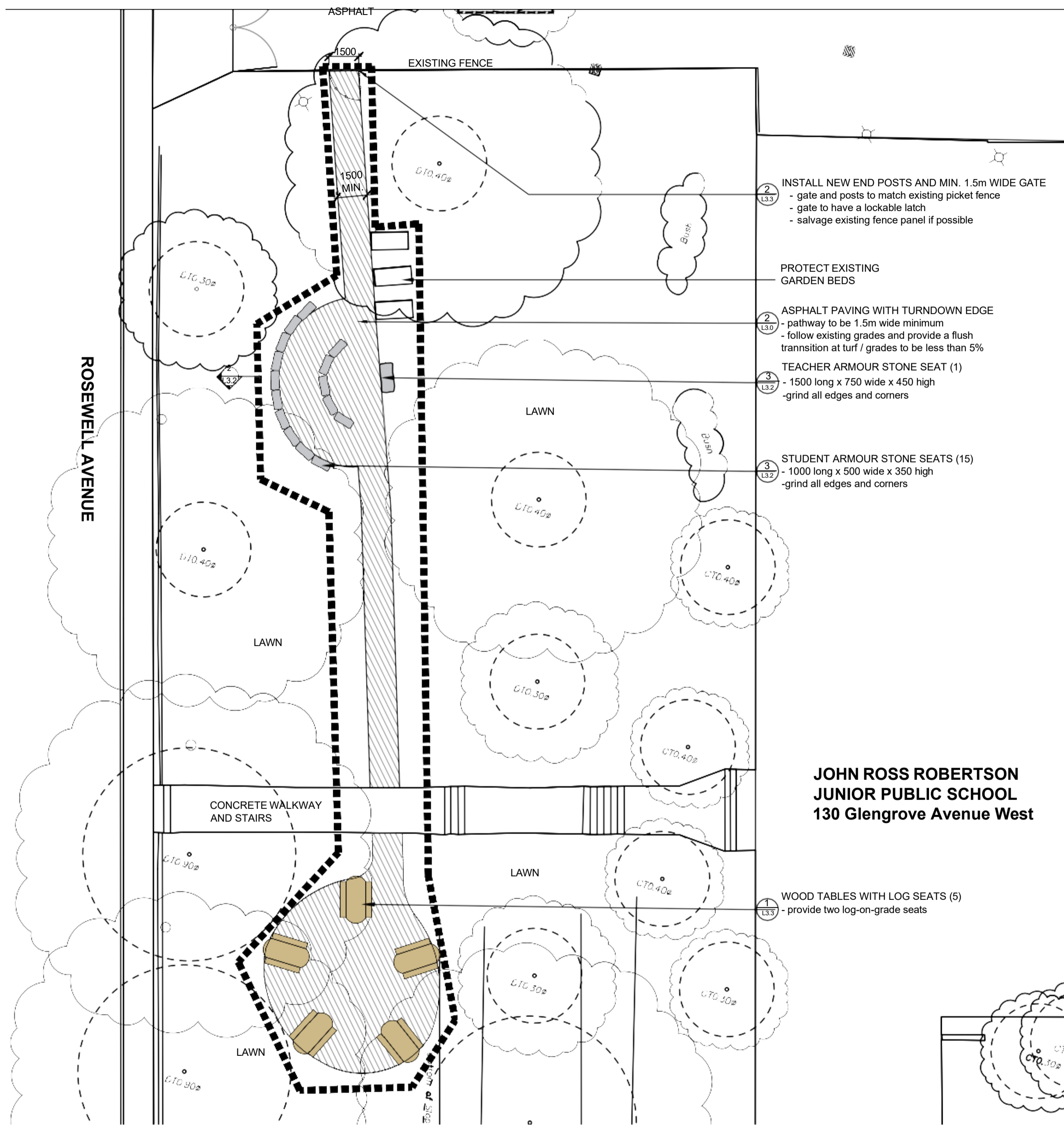
1. ALL WORKS SHALL CONFORM TO THE REQUIREMENTS, STANDARDS, AND DIRECTION OF THE TORONTO DISTRICT SCHOOL BOARD.
2. THE CONTRACTOR SHALL CONTACT THE LANDSCAPE ARCHITECT TO OBTAIN THE TORONTO DISTRICT SCHOOL BOARD'S APPROVAL ON ANY PROPOSED SUBSTITUTIONS IN MATERIALS, OR DEVIANCES FROM CONSTRUCTION METHODS, AS DESCRIBED ON THE DRAWINGS AND SPECIFICATIONS. THE TORONTO DISTRICT SCHOOL BOARD MAY NOT APPROVE SUBSTITUTIONS OR ALTERNATE METHODS. THE CONTRACTOR IS RESPONSIBLE FOR ENSURING COMPLIANCE WITH DRAWINGS AND SPECIFICATIONS WHICH MAY INCLUDE REMOVAL OF ANY WORK NOT APPROVED BY THE TORONTO DISTRICT SCHOOL BOARD.
3. THE CONTRACTOR SHALL IMMEDIATELY NOTIFY THE LANDSCAPE ARCHITECT OF ANY DISCREPANCIES BETWEEN THE DRAWINGS AND THE CONDITIONS ENCOUNTERED ON-SITE.
4. THE CONTRACTOR SHALL STAKE OR SPRAY PAINT ALIGNMENT OR LOCATION OF ALL NEW FACILITIES PRIOR TO CARRYING OUT ANY EXCAVATIONS OR INSTALLATIONS, FOR VERIFICATION BY THE LANDSCAPE ARCHITECT.
5. THE CONTRACTOR SHALL PROTECT FROM DAMAGE ALL TREES OR PROPERTY ON TORONTO DISTRICT SCHOOL BOARD PROPERTY OR ADJACENT PROPERTIES. NOT INDICATED TO BE REMOVED. ANY DAMAGE SHALL BE IMMEDIATELY REPAIRED TO THE BOARD'S SATISFACTION.
6. ANY ENVIRONMENTAL PROTECTION AND/OR MITIGATION WORKS THAT MAY BE REQUIRED IN ADDITION TO THOSE SET OUT IN THESE DOCUMENTS SHALL BE INSTALLED AS SOON AS POSSIBLE UPON APPROVAL OF THE TORONTO DISTRICT SCHOOL BOARD.
7. THE CONTRACTOR SHALL KEEP ALL CONSTRUCTION RELATED ACCESS AND ACTIVITIES WITHIN THE DESIGNATED "LIMIT OF WORK AREA."
8. ALL PORTIONS OF THE WORK MUST BE AVAILABLE AT ALL TIMES WHILE WORK IS BEING PERFORMED, FOR INSPECTION BY DESIGNATED REPRESENTATIVES OF THE TORONTO DISTRICT SCHOOL BOARD AND/OR THE LANDSCAPE ARCHITECT.
9. ALL QUESTIONS, ALTERNATE PROPOSALS, REQUESTS FOR INFORMATION OR INSPECTION, ETC. SHALL BE DIRECTED TO THE LANDSCAPE ARCHITECT.
10. EMERGENCY CONTACT INFORMATION FOR THE TORONTO DISTRICT SCHOOL BOARD WILL BE PROVIDED TO THE CONTRACTOR PRIOR TO CONSTRUCTION START-UP.

No.	Issued Description	YYYY-MM-DD
01	Issued for Review	2019-12-05
02	Issued for Draft Tender	2019-01-07
03	Issued for Tender	2019-01-29
04	Issued for Construction	2020-09-15
05	Change Order 01 (DRAFT)	2020-12-22
06	Change Order 01 (DRAFT)	2021-02-17



MATERIALS LEGEND

-  MULCH
-  ASPHALT
-  NEW CHAIN-LINK FENCING
-  FENCING TO BE PROTECTED
-  NEW DECIDUOUS TREES
-  EXISTING DECIDUOUS TREES TO BE PROTECTED WITH MINIMUM CITY OF TORONTO TREE PROTECTION ZONE
-  TREE PROTECTION FENCING (CITY OF TORONTO STANDARD)
-  CONSTRUCTION FENCING AT LIMIT OF WORK



2
L3.3
INSTALL NEW END POSTS AND MIN. 1.5m WIDE GATE
- gate and posts to match existing picket fence
- gate to have a lockable latch
- salvage existing fence panel if possible

PROTECT EXISTING GARDEN BEDS

2
L3.0
ASPHALT PAVING WITH TURNDOWN EDGE
- pathway to be 1.5m wide minimum
- follow existing grades and provide a flush transition at turf / grades to be less than 5%

3
L3.2
TEACHER ARMOUR STONE SEAT (1)
- 1500 long x 750 wide x 450 high
- grind all edges and corners

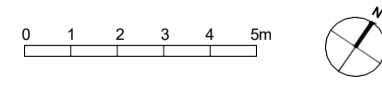
3
L3.2
STUDENT ARMOUR STONE SEATS (15)
- 1000 long x 500 wide x 350 high
- grind all edges and corners

1
L3.3
WOOD TABLES WITH LOG SEATS (5)
- provide two log-on-grade seats

**JOHN ROSS ROBERTSON
JUNIOR PUBLIC SCHOOL
130 Glengrove Avenue West**

ROSEWELL AVENUE

Project Location:
TDSB PROJECT TR-18-0728
JOHN ROSS ROBERTSON
JUNIOR PUBLIC SCHOOL
130 Glengrove Ave West
Toronto, Ontario, M4R 1P2



Sheet Title:
MATERIALS & PLANTING
PLAN

Scale: 1:100

Sheet Number:
L2.0 B

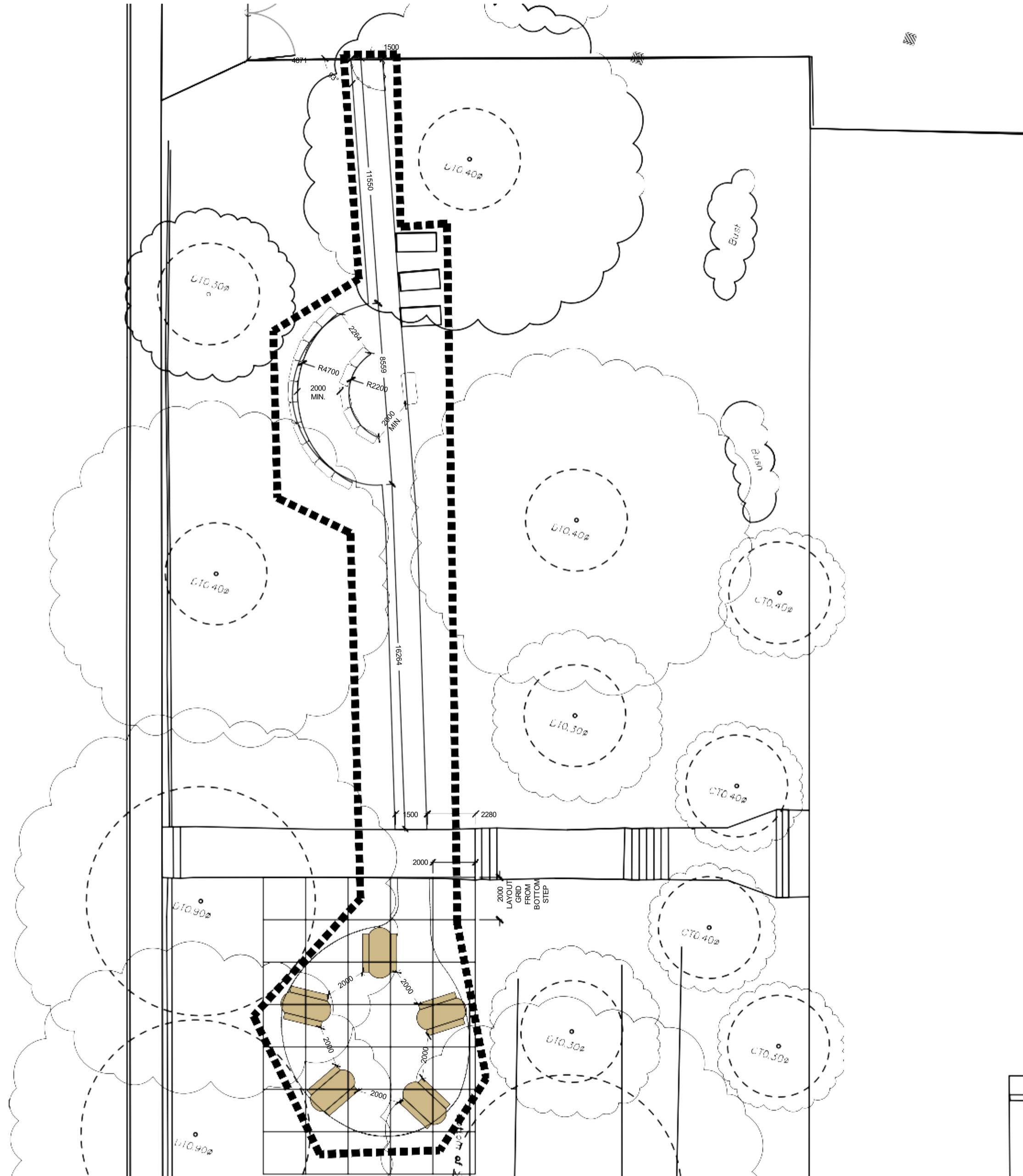
Forest and Field Landscape Architecture

t 647 933 1152
info@forestandfield.ca

GENERAL NOTES:

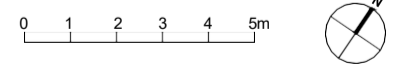
1. ALL WORKS SHALL CONFORM TO THE REQUIREMENTS, STANDARDS, AND DIRECTION OF THE TORONTO DISTRICT SCHOOL BOARD.
2. THE CONTRACTOR SHALL CONTACT THE LANDSCAPE ARCHITECT TO OBTAIN THE TORONTO DISTRICT SCHOOL BOARD'S APPROVAL ON ANY PROPOSED SUBSTITUTIONS IN MATERIALS, OR DEVIANCES FROM CONSTRUCTION METHODS, AS DESCRIBED ON THE DRAWINGS AND SPECIFICATIONS. THE TORONTO DISTRICT SCHOOL BOARD MAY NOT APPROVE SUBSTITUTIONS OR ALTERNATE METHODS. THE CONTRACTOR IS RESPONSIBLE FOR ENSURING COMPLIANCE WITH DRAWINGS AND SPECIFICATIONS WHICH MAY INCLUDE REMOVAL OF ANY WORK NOT APPROVED BY THE TORONTO DISTRICT SCHOOL BOARD.
3. THE CONTRACTOR SHALL IMMEDIATELY NOTIFY THE LANDSCAPE ARCHITECT OF ANY DISCREPANCIES BETWEEN THE DRAWINGS AND THE CONDITIONS ENCOUNTERED ON-SITE.
4. THE CONTRACTOR SHALL STAKE OR SPRAY PAINT ALIGNMENT OR LOCATION OF ALL NEW FACILITIES PRIOR TO CARRYING OUT ANY EXCAVATIONS OR INSTALLATIONS, FOR VERIFICATION BY THE LANDSCAPE ARCHITECT.
5. THE CONTRACTOR SHALL PROTECT FROM DAMAGE ALL TREES OR PROPERTY ON TORONTO DISTRICT SCHOOL BOARD PROPERTY OR ON ADJACENT PROPERTIES, NOT INDICATED TO BE REMOVED. ANY DAMAGE SHALL BE IMMEDIATELY REPAIRED TO THE BOARD'S SATISFACTION.
6. ANY ENVIRONMENTAL PROTECTION AND/OR MITIGATION WORKS THAT MAY BE REQUIRED IN ADDITION TO THOSE SET OUT IN THESE DOCUMENTS SHALL BE INSTALLED AS SOON AS POSSIBLE UPON APPROVAL OF THE TORONTO DISTRICT SCHOOL BOARD.
7. THE CONTRACTOR SHALL KEEP ALL CONSTRUCTION RELATED ACCESS AND ACTIVITIES WITHIN THE DESIGNATED "LIMIT OF WORK AREA."
8. ALL PORTIONS OF THE WORK MUST BE AVAILABLE AT ALL TIMES WHILE WORK IS BEING PERFORMED, FOR INSPECTION BY DESIGNATED REPRESENTATIVES OF THE TORONTO DISTRICT SCHOOL BOARD AND/OR THE LANDSCAPE ARCHITECT.
9. ALL QUESTIONS, ALTERNATE PROPOSALS, REQUESTS FOR INFORMATION OR INSPECTION, ETC. SHALL BE DIRECTED TO THE LANDSCAPE ARCHITECT.
10. EMERGENCY CONTACT INFORMATION FOR THE TORONTO DISTRICT SCHOOL BOARD WILL BE PROVIDED TO THE CONTRACTOR PRIOR TO CONSTRUCTION START-UP.

No.	Issued Description	YYYY-MM-DD
01	Issued for Review	2019-12-05
02	Issued for Draft Tender	2019-01-07
03	Issued for Tender	2019-01-29
04	Issued for Construction	2020-09-15
05	Change Order 01 (DRAFT)	2020-12-22
06	Change Order 01 (DRAFT)	2021-02-17



Project Location:

TDSB PROJECT TR-18-0728
JOHN ROSS ROBERTSON
JUNIOR PUBLIC SCHOOL
130 Glengrove Ave West
Toronto, Ontario, M4R 1P2



Sheet Title:

LAYOUT PLAN

Scale 1:100

Sheet Number:

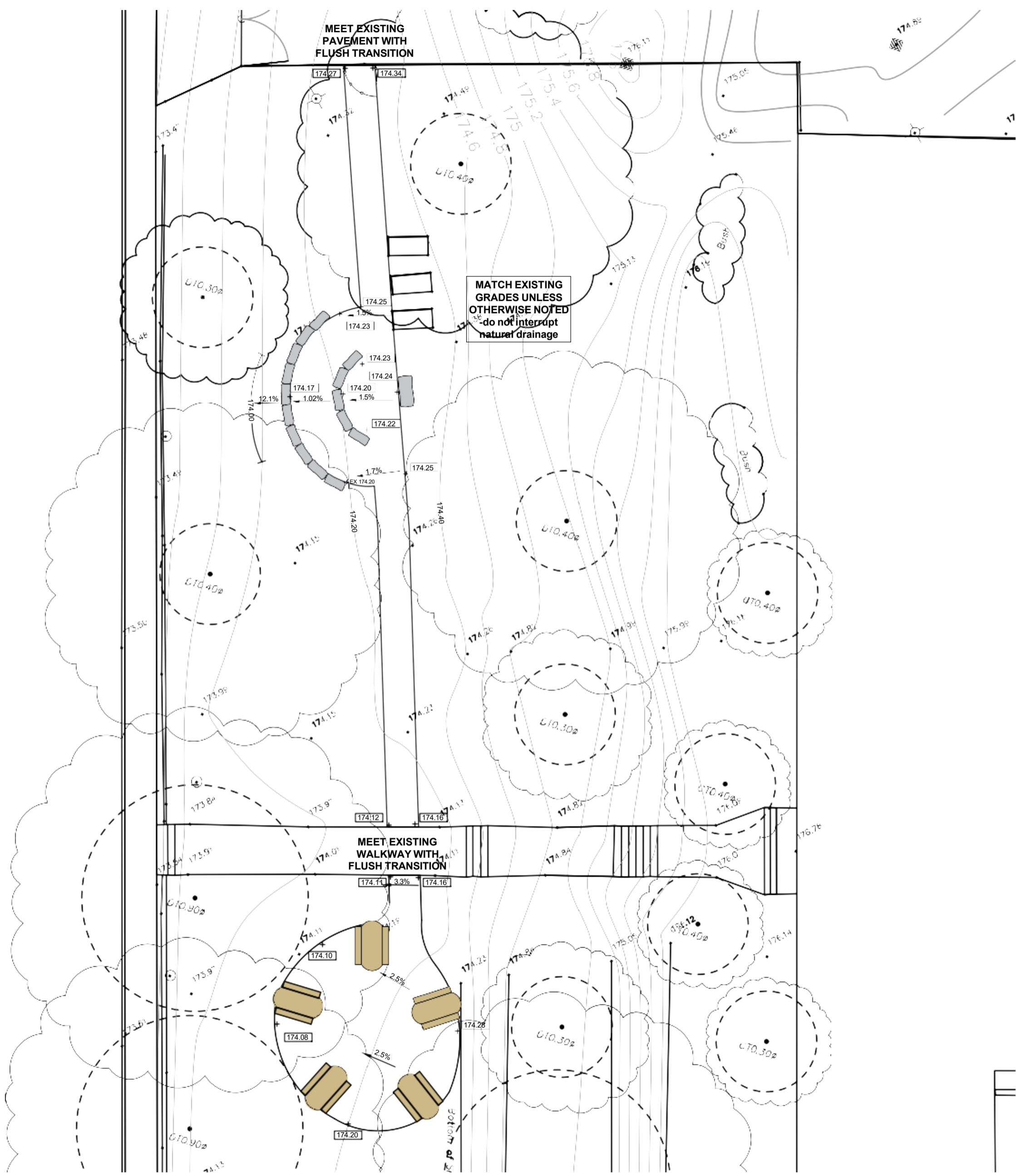
L2.1 B

GRADING LEGEND

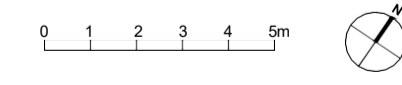
- EXISTING ELEVATION (SURVEY)
- + 220.58 EX EXISTING ELEVATION TO BE MAINTAINED IN AREA OF WORK
- + 220.55 DESIGN ELEVATION
- 1.0% SLOPE DIRECTION
- 152.90 EXISTING CONTOUR LINES
- 152.90 DESIGN CONTOUR LINES

- GENERAL NOTES:**
1. ALL WORKS SHALL CONFORM TO THE REQUIREMENTS, STANDARDS, AND DIRECTION OF THE TORONTO DISTRICT SCHOOL BOARD.
 2. THE CONTRACTOR SHALL CONTACT THE LANDSCAPE ARCHITECT TO OBTAIN THE TORONTO DISTRICT SCHOOL BOARD'S APPROVAL ON ANY PROPOSED SUBSTITUTIONS IN MATERIALS, OR DEVIANCES FROM CONSTRUCTION METHODS, AS DESCRIBED ON THE DRAWINGS AND SPECIFICATIONS. THE TORONTO DISTRICT SCHOOL BOARD MAY NOT APPROVE SUBSTITUTIONS OR ALTERNATE METHODS. THE CONTRACTOR IS RESPONSIBLE FOR ENSURING COMPLIANCE WITH DRAWINGS AND SPECIFICATIONS WHICH MAY INCLUDE REMOVAL OF ANY WORK NOT APPROVED BY THE TORONTO DISTRICT SCHOOL BOARD.
 3. THE CONTRACTOR SHALL IMMEDIATELY NOTIFY THE LANDSCAPE ARCHITECT OF ANY DISCREPANCIES BETWEEN THE DRAWINGS AND THE CONDITIONS ENCOUNTERED ON-SITE.
 4. THE CONTRACTOR SHALL STAKE OR SPRAY PAINT ALIGNMENT OR LOCATION OF ALL NEW FACILITIES PRIOR TO CARRYING OUT ANY EXCAVATIONS OR INSTALLATIONS, FOR VERIFICATION BY THE LANDSCAPE ARCHITECT.
 5. THE CONTRACTOR SHALL PROTECT FROM DAMAGE ALL TREES OR PROPERTY ON TORONTO DISTRICT SCHOOL BOARD PROPERTY OR ON ADJACENT PROPERTIES, NOT INDICATED TO BE REMOVED. ANY DAMAGE SHALL BE IMMEDIATELY REPAIRED TO THE BOARD'S SATISFACTION.
 6. ANY ENVIRONMENTAL PROTECTION AND/OR MITIGATION WORKS THAT MAY BE REQUIRED IN ADDITION TO THOSE SET OUT IN THESE DOCUMENTS SHALL BE INSTALLED AS SOON AS POSSIBLE UPON APPROVAL OF THE TORONTO DISTRICT SCHOOL BOARD.
 7. THE CONTRACTOR SHALL KEEP ALL CONSTRUCTION RELATED ACCESS AND ACTIVITIES WITHIN THE DESIGNATED "LIMIT OF WORK AREA."
 8. ALL PORTIONS OF THE WORK MUST BE AVAILABLE AT ALL TIMES WHILE WORK IS BEING PERFORMED, FOR INSPECTION BY DESIGNATED REPRESENTATIVES OF THE TORONTO DISTRICT SCHOOL BOARD AND/OR THE LANDSCAPE ARCHITECT.
 9. ALL QUESTIONS, ALTERNATE PROPOSALS, REQUESTS FOR INFORMATION OR INSPECTION, ETC. SHALL BE DIRECTED TO THE LANDSCAPE ARCHITECT.
 10. EMERGENCY CONTACT INFORMATION FOR THE TORONTO DISTRICT SCHOOL BOARD WILL BE PROVIDED TO THE CONTRACTOR PRIOR TO CONSTRUCTION START-UP.

No.	Issued Description	YYYY-MM-DD
01	Issued for Review	2019-12-05
02	Issued for Draft Tender	2019-01-07
03	Issued for Tender	2019-01-29
04	Issued for Construction	2020-09-15
05	Change Order 01 (DRAFT)	2020-12-22
06	Change Order 01 (DRAFT)	2021-02-17



Project Location:
 TDSB PROJECT TR-18-0728
 JOHN ROSS ROBERTSON
 JUNIOR PUBLIC SCHOOL
 130 Glengrove Ave West
 Toronto, Ontario, M4R 1P2



Sheet Title:
 GRADING PLAN

Scale: 1:100

Sheet Number:
 L2.2 B

GENERAL NOTES:

- ALL WORKS SHALL CONFORM TO THE REQUIREMENTS, STANDARDS, AND DIRECTION OF THE TORONTO DISTRICT SCHOOL BOARD.
- THE CONTRACTOR SHALL CONTACT THE LANDSCAPE ARCHITECT TO OBTAIN THE TORONTO DISTRICT SCHOOL BOARD'S APPROVAL ON ANY PROPOSED SUBSTITUTIONS IN MATERIALS, OR DEVIANCES FROM CONSTRUCTION METHODS, AS DESCRIBED ON THE DRAWINGS AND SPECIFICATIONS. THE TORONTO DISTRICT SCHOOL BOARD MAY NOT APPROVE SUBSTITUTIONS OR ALTERNATE METHODS. THE CONTRACTOR IS RESPONSIBLE FOR ENSURING COMPLIANCE WITH DRAWINGS AND SPECIFICATIONS WHICH MAY INCLUDE REMOVAL OF ANY WORK NOT APPROVED BY THE TORONTO DISTRICT SCHOOL BOARD.
- THE CONTRACTOR SHALL IMMEDIATELY NOTIFY THE LANDSCAPE ARCHITECT OF ANY DISCREPANCIES BETWEEN THE DRAWINGS AND THE CONDITIONS ENCOUNTERED ON-SITE.
- THE CONTRACTOR SHALL STAKE OR SPRAY PAINT ALIGNMENT OR LOCATION OF ALL NEW FACILITIES PRIOR TO CARRYING OUT ANY EXCAVATIONS OR INSTALLATIONS, FOR VERIFICATION BY THE LANDSCAPE ARCHITECT.
- THE CONTRACTOR SHALL PROTECT FROM DAMAGE ALL TREES OR PROPERTY ON TORONTO DISTRICT SCHOOL BOARD PROPERTY OR ON ADJACENT PROPERTIES. NOT INDICATED TO BE REMOVED. ANY DAMAGE SHALL BE IMMEDIATELY REPAIRED TO THE BOARD'S SATISFACTION.
- ANY ENVIRONMENTAL PROTECTION AND/OR MITIGATION WORKS INCLUDING EROSION AND SEDIMENT CONTROL WORKS THAT MAY BE REQUIRED IN ADDITION TO THOSE SET OUT IN THESE DOCUMENTS SHALL BE INSTALLED AS SOON AS POSSIBLE UPON APPROVAL OF THE TORONTO DISTRICT SCHOOL BOARD.
- THE CONTRACTOR SHALL KEEP ALL CONSTRUCTION RELATED ACCESS AND ACTIVITIES WITHIN THE DESIGNATED "LIMIT OF WORK AREA".
- ALL PORTIONS OF THE WORK MUST BE AVAILABLE AT ALL TIMES WHILE WORK IS BEING PERFORMED. FOR INSPECTION BY DESIGNATED REPRESENTATIVES OF THE TORONTO DISTRICT SCHOOL BOARD AND/OR THE LANDSCAPE ARCHITECT.
- ALL QUESTIONS, ALTERNATE PROPOSALS, REQUESTS FOR INFORMATION OR INSPECTION, ETC. SHALL BE DIRECTED TO THE LANDSCAPE ARCHITECT.
- EMERGENCY CONTACT INFORMATION FOR THE TORONTO DISTRICT SCHOOL BOARD WILL BE PROVIDED TO THE CONTRACTOR PRIOR TO CONSTRUCTION START-UP.

No.	Issued Description	YYYY-MM-DD
01	Issued for Review	2019-12-05
02	Issued for Draft Tender	2019-01-07
03	Issued for Tender	2019-01-29
04	Issued for Construction	2020-09-15
05	Change Order 01 (DRAFT)	2020-12-22
06	Change Order 01 (DRAFT)	2021-02-17



Project Location:
TDSB PROJECT TR-18-0728
JOHN ROSS ROBERTSON
JUNIOR PUBLIC SCHOOL
130 Glengrove Ave West
Toronto, Ontario, M4R 1P2

Sheet Title:
DETAILS

Scale 1:100

Sheet Number:
L3.3



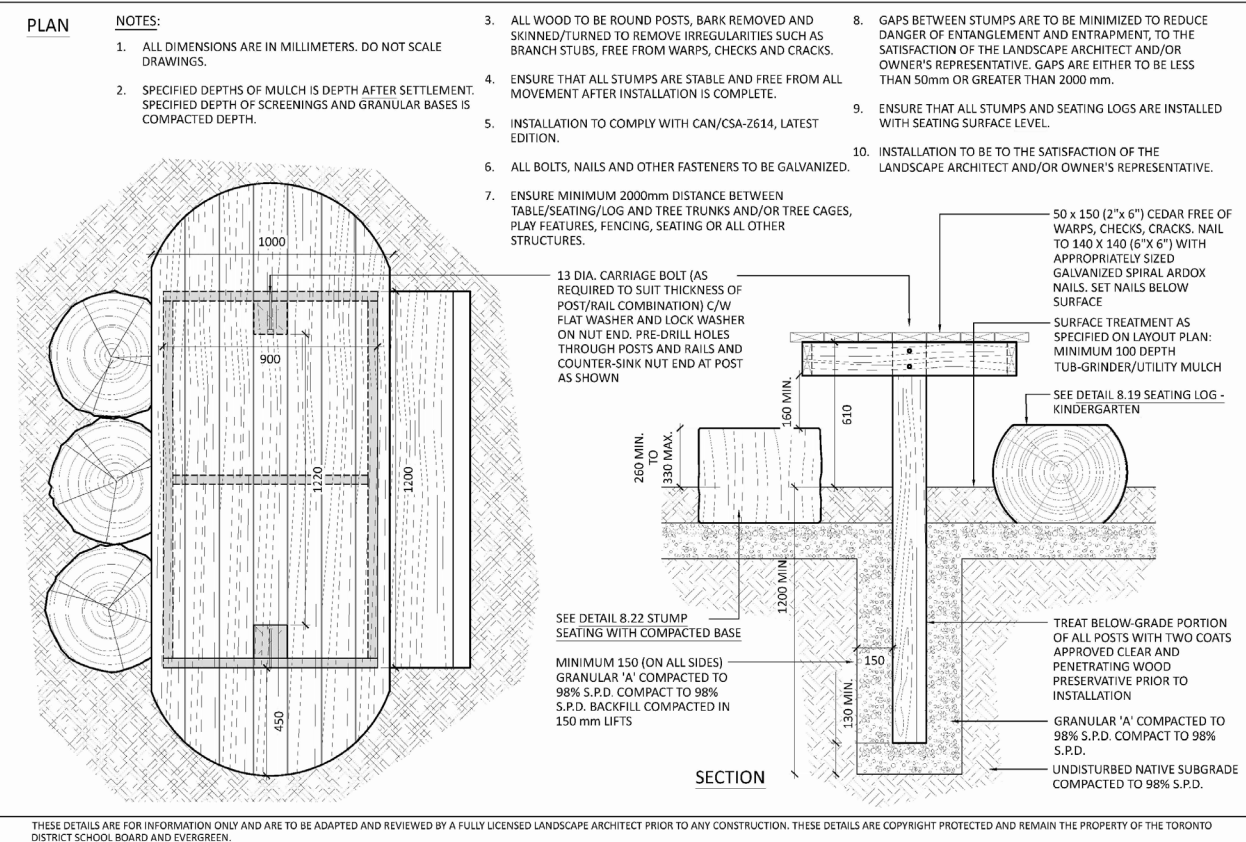
EXISTING WROUGHT IRON FENCE COMPONENTS:

POSTS: 2"x2" HSS SQUARE POST
POST CAPS: PYRAMIDAL 1-1/2" ABOVE TOP RAIL
TOP & BOTTOM RAILS: 2"x2" L-CHANNEL (DOUBLE RAIL AT TOP)
PICKETS: 1/2" SOLID SQUARE BAR

* CONTRACTOR TO VERIFY ALL OF THE ABOVE ON SITE

NEW GATE COMPONENTS:
- NEW OR SALVAGED MATCHING TOP AND BOTTOM RAILS AND PICKETS
- NEW POSTS/FRAME
- HINGES
- LOCKABLE LATCH
- CLEAR OPENING WIDTH MIN. 1.5m
- IF NEW POSTS ARE REQUIRED, FOOTING STO BE MIN. 1219mm DEPTH AND 200mm DIA.

CONTRACTOR TO PROVIDE SHOP DRAWINGS TO APPROVAL



THESE DETAILS ARE FOR INFORMATION ONLY AND ARE TO BE ADAPTED AND REVIEWED BY A FULLY LICENSED LANDSCAPE ARCHITECT PRIOR TO ANY CONSTRUCTION. THESE DETAILS ARE COPYRIGHT PROTECTED AND REMAIN THE PROPERTY OF THE TORONTO DISTRICT SCHOOL BOARD AND EVERGREEN.

<p>TDSB ELEMENTARY SCHOOL SITE DESIGN GUIDELINES TABLE AND LOG SEATING KINDERGARTEN</p>	SCALE: NTS	ISSUE/REVISION: FINAL
	DATE: NOV 2018	DWG NO.: 8.21

1 TABLE AND LOG SEATING
NTS

2 NEW GATE AT EXISTING PICKET FENCE
NTS