

ID	Task Mode	Task Name	Notes	Start	Finish	Duration	Gantt Chart (Timeline from Feb 2019 to Aug 2020)																							
1	✓	MOBILIZATION		Mon 3/25/19	Fri 3/29/19	5 days																								
2	✓	HOARDING / TREE PROTECTION		Mon 3/25/19	Fri 3/29/19	5 days																								
3	✓	SITE DEMO / CLEARING		Mon 4/1/19	Fri 4/19/19	15 days																								
4	✓	TEMPORARY ACCESS FOR 68 DAVISVILLE AVENUE		Mon 4/1/19	Fri 4/5/19	5 days																								
5	✓	MUD MATT INSTALLATION		Mon 4/8/19	Tue 4/9/19	2 days																								
6																														
7	✓	BELOW GRADE CONSTRUCTION		Thu 4/11/19	Wed 5/27/20	295 days																								
8	✓	BASEMENT PARKING STRUCTURE GRIDLINE 1 - 12		Thu 4/11/19	Wed 5/27/20	295 days																								
9	✓	EXCAVATION		Thu 4/11/19	Wed 4/24/19	10 days																								
10	✓	SHORING		Mon 5/6/19	Thu 5/23/19	14 days																								
11	✓	DETAILED EXCAVATION - FOOTINGS / PIER FOOTING		Mon 5/20/19	Fri 7/19/19	45 days																								
12	✓	WATERPROOFING		Mon 7/1/19	Fri 8/16/19	35 days																								
13	✓	FOUNDATION FORMING		Mon 6/3/19	Fri 7/26/19	40 days																								
14	✓	FOUNDATION REBAR		Fri 5/24/19	Thu 6/6/19	10 days																								
15	✓	FOUNDATION CONCRETE POUR		Tue 6/4/19	Fri 8/2/19	44 days																								
16	✓	WEEPING TILE AT PERIMETER		Thu 6/20/19	Fri 8/2/19	32 days																								
17	✓	WEEPING TILE UNDER SLAB ON GRADE		Mon 7/15/19	Fri 8/2/19	15 days																								
18	✓	STONE FOR SLAB ON GRADE		Mon 7/22/19	Fri 8/2/19	10 days																								
19	✓	VAPOUR BARRIER INSTALLATION U/S SLAB ON GRADE		Mon 7/15/19	Fri 8/2/19	15 days																								
20	✓	FORMING GROUND FLOOR SLAB		Mon 8/19/19	Fri 9/6/19	15 days																								
21	✓	REBAR FOR GROUND FLOOR SLAB		Mon 9/2/19	Fri 9/20/19	15 days																								
22	✓	MECHANICAL / ELECTRICAL ROUGH-INS		Mon 9/2/19	Fri 9/20/19	15 days																								
23	✓	CONCRETE POUR FOR GROUND FLOOR SLAB - suspended		Mon 9/23/19	Tue 9/24/19	2 days																								
24	✓	POUR SLAB ON GRADE - parking slab		Mon 8/5/19	Tue 8/6/19	2 days																								
25	✓	PRECAST STAIRS (STAIR G)		Mon 12/2/19	Wed 5/27/20	128 days																								
26	✓	BASEMENT PARKING STRUCTURE GRIDLINE 12-18		Mon 7/15/19	Wed 5/27/20	228 days																								
27	✓	EXCAVATION	work period extended due to 68 davisville issues	Mon 7/15/19	Fri 2/21/20	160 days																								
28	✓	SHORING	additional shoring added b/w grid 16a & 16b, also period extended due to 68 davisville issues	Mon 7/22/19	Fri 12/13/19	105 days																								
29	✓	DETAILED EXCAVATION - FOOTINGS / PIER FOOTING	work period extended due to 68 davisville issues	Mon 8/26/19	Fri 2/28/20	135 days																								
30	✓	WATERPROOFING	work period extended due to 68 davisville issues	Mon 8/12/19	Tue 4/7/20	172 days																								
31	✓	FOUNDATION FORMING + ELEVATOR PIT FORMING	work period extended due to 68 davisville issues	Mon 8/26/19	Wed 3/18/20	148 days																								
32	✓	FOUNDATION REBAR	work period extended due to 68 davisville issues	Mon 8/12/19	Wed 3/18/20	158 days																								
33	✓	FOUNDATION CONCRETE POUR	work period extended due to 68 davisville issues	Mon 9/16/19	Wed 3/18/20	133 days																								
34	✓	WEEPING TILE AT PERIMETER	work period extended due to 68 davisville issues	Mon 9/30/19	Wed 3/25/20	128 days																								
35	✓	WEEPING TILE UNDER SLAB ON GRADE	work period extended due to 68 davisville issues	Mon 10/14/19	Mon 3/9/20	106 days																								
36	✓	STONE FOR SLAB ON GRADE	work period extended due to 68 davisville issues	Wed 10/16/19	Tue 3/10/20	105 days																								
37	✓	VAPOUR BARRIER (fabric cloth) INSTALLATION U/S SLAB ON GRADE	work period extended due to 68 davisville issues	Mon 10/28/19	Mon 3/9/20	96 days																								
38	✓	POUR SLAB ON GRADE - parking slab	work period extended due to 68 davisville issues	Wed 11/20/19	Fri 2/28/20	73 days																								
39	✓	FORMING GROUND-SUSPENDED FLOOR SLAB	work period extended due to 68 davisville issues	Mon 11/25/19	Tue 3/24/20	87 days																								

Project: Redevelopment of Dav Date: Wed 6/10/20

	Task		Summary		Inactive Milestone		Duration-only		Start-only		External Milestone		Critical Split
	Split		Project Summary		Inactive Summary		Manual Summary Rollup		Finish-only		Deadline		Progress
	Milestone		Inactive Task		Manual Task		Manual Summary		External Tasks		Critical		Manual Progress

Page 1

ID	Task Mode	Task Name	Notes	Start	Finish	Duration	Gantt Chart (Monthly: February to August)																											
40	✓	REBAR FOR GROUND-SUSPENDED FLOOR SLAB	work period extended due to 68 davisville issues	Mon 12/2/19	Mon 3/23/20	81 days	[Gantt bar from Feb 12 to Mar 23]																											
41	✓	MECHANICAL / ELECTRICAL ROUGH-INS	work period extended due to 68 davisville issues	Mon 11/25/19	Fri 3/20/20	85 days	[Gantt bar from Nov 25 to Mar 20]																											
42	✓	CONCRETE POUR FOR GROUND-SUSPENDED FLOOR SLAB	work period extended due to 68 davisville issues	Wed 12/18/19	Fri 4/3/20	78 days	[Gantt bar from Dec 18 to Apr 3]																											
43	✓	BASEMENT RAMP PREP WORK & STONE PLACEMENT	work period extended due to 68 davisville issues	Fri 3/20/20	Thu 3/26/20	5 days	[Gantt bar from Mar 20 to Mar 26]																											
44	✓	POUR BASEMENT RAMP	work period extended due to 68 davisville issues	Tue 3/24/20	Fri 4/10/20	14 days	[Gantt bar from Mar 24 to Apr 10]																											
45	✓	PRECAST STAIRS - STAIR G		Thu 3/19/20	Wed 5/27/20	50 days	[Gantt bar from Mar 19 to May 27]																											
46	✓	FOUNDATION WORK GRIDLINE A-G & 1-16		Thu 5/16/19	Fri 12/13/19	152 days	[Summary bar from May 16 to Dec 13]																											
47	✓	EXCAVATION	work period extended due to 68 davisville issues	Thu 5/16/19	Fri 9/6/19	82 days	[Gantt bar from May 16 to Sep 6]																											
48	✓	DETAILED EXCAVATION - FOOTINGS / PIER FOOTING	work period altered due to 68 davisville issues	Mon 5/20/19	Fri 9/20/19	90 days	[Gantt bar from May 20 to Sep 20]																											
49	✓	FOUNDATION FORMING	work period altered due to 68 davisville issues	Mon 5/27/19	Fri 11/22/19	130 days	[Gantt bar from May 27 to Nov 22]																											
50	✓	FOUNDATION REBAR	work period altered due to 68 davisville issues	Mon 5/27/19	Fri 11/22/19	130 days	[Gantt bar from May 27 to Nov 22]																											
51	✓	FOUNDATION CONCRETE POUR	work period altered due to 68 davisville issues	Mon 6/10/19	Fri 11/15/19	115 days	[Gantt bar from Jun 10 to Nov 15]																											
52	✓	WATERPROOFING	work period altered due to 68 davisville issues	Mon 7/8/19	Wed 11/20/19	98 days	[Gantt bar from Jul 8 to Nov 20]																											
53	✓	PERIMETER FOUNDATION INSUALTION	work period altered due to 68 davisville issues	Mon 7/15/19	Fri 11/22/19	95 days	[Gantt bar from Jul 15 to Nov 22]																											
54	✓	WEEPING TILE AT PERIMETER	work period altered due to 68 davisville issues	Thu 7/18/19	Mon 12/2/19	98 days	[Gantt bar from Jul 18 to Dec 2]																											
55	✓	BACKFILLING	work period altered due to 68 davisville issues	Mon 7/22/19	Fri 12/6/19	100 days	[Gantt bar from Jul 22 to Dec 6]																											
56	✓	STONE FOR SLAB ON GRADE	work period altered due to 68 davisville issues	Mon 12/9/19	Wed 12/11/19	3 days	[Gantt bar from Dec 9 to Dec 11]																											
57	✓	VAPOUR BARRIER INSTALLATION U/S SLAB ON GRADE	work period altered due to 68 davisville issues	Tue 12/10/19	Thu 12/12/19	3 days	[Gantt bar from Dec 10 to Dec 12]																											
58	✓	POUR GROUND FLOOR SLAB	work period altered due to 68 davisville issues	Thu 12/12/19	Fri 12/13/19	2 days	[Gantt bar from Dec 12 to Dec 13]																											
59	✓	SUPERSTRUCTURE CONSTRUCTION		Wed 8/21/19	Wed 10/28/20	311 days	[Summary bar from Aug 21 to Oct 28]																											
60	✓	GROUND FLOOR		Wed 8/21/19	Fri 6/26/20	223 days	[Summary bar from Aug 21 to Jun 26]																											
61	✓	LOAD BEARING MASONRY WALLS	work period extended due to 68 davisville issues	Wed 8/21/19	Fri 1/31/20	118 days	[Gantt bar from Aug 21 to Jan 31]																											
62	✓	NON LOAD BEARING MASONRY WALLS	work period extended due to 68 davisville issues	Mon 12/16/19	Fri 5/1/20	100 days	[Gantt bar from Dec 16 to May 1]																											
63	✓	STRUCTURAL STEEL FRAMING - GYM AREA	work period extended due to 68 davisville issues	Mon 9/9/19	Fri 12/13/19	70 days	[Gantt bar from Sep 9 to Dec 13]																											
64	✓	STRUCTURAL STEEL - GYM JOISTS	work period extended due to 68 davisville issues	Mon 1/6/20	Fri 1/24/20	15 days	[Gantt bar from Jan 6 to Jan 24]																											
65	✓	MASONRY WALL INFILL - GYM AREA	work period extended due to 68 davisville issues	Wed 12/11/19	Wed 5/27/20	121 days	[Gantt bar from Dec 11 to May 27]																											
66	✓	STEEL DECK - FLOOR ASSEMBLY ABOVE GYM	work period extended due to 68 davisville issues	Fri 4/10/20	Fri 5/22/20	31 days	[Gantt bar from Apr 10 to May 22]																											
67	✓	STRUCTURAL STEEL - FOR PRECAST	work period extended due to 68 davisville issues	Mon 1/13/20	Fri 1/31/20	15 days	[Gantt bar from Jan 13 to Jan 31]																											
68	✓	PRECAST SLABS - 2nd flr	work period extended due to 68 davisville issues	Mon 12/9/19	Fri 2/7/20	45 days	[Gantt bar from Dec 9 to Feb 7]																											
69	✓	PRECAST STAIRS	work period altered due to 68 davisville issues	Mon 12/2/19	Fri 1/31/20	45 days	[Gantt bar from Dec 2 to Jan 31]																											

Project: Redevelopment of Dav Date: Wed 6/10/20

Task	Summary	Inactive Milestone	Duration-only	Start-only	External Milestone	Critical Split
Split	Project Summary	Inactive Summary	Manual Summary Rollup	Finish-only	Deadline	Progress
Milestone	Inactive Task	Manual Task	Manual Summary	External Tasks	Critical	Manual Progress

ID	Task Mode	Task Name	Notes	Start	Finish	Duration	Gantt Chart (Timeline from Feb 2020 to Aug 2020)																											
70	✓	PRECAST GROUTING	work period altered due to 68 davisville issues	Tue 12/10/19	Fri 1/31/20	39 days	[Gantt bar from Feb 12 to Feb 22]																											
71	✓	MECHANICAL / ELECTRICAL ROUGH-INS	work period altered due to 68 davisville issues	Wed 8/21/19	Fri 6/26/20	223 days	[Gantt bar from Aug 21 to Jun 26]																											
72	✓	SPRINKLER ROUGHINS	work period altered due to 68 davisville issues	Wed 8/21/19	Fri 6/26/20	223 days	[Gantt bar from Aug 21 to Jun 26]																											
73	✓	HVAC ROUGH INS	work period altered due to 68 davisville issues	Wed 8/21/19	Fri 6/26/20	223 days	[Gantt bar from Aug 21 to Jun 26]																											
74	☒	SECOND FLOOR		Mon 1/6/20	Wed 10/28/20	213 days	[Summary bar from Jan 6 to Oct 28]																											
75	✓	METAL DECK TOPPING	work period extended due to 68 davisville issues	Mon 3/30/20	Tue 6/2/20	47 days	[Gantt bar from Mar 30 to Jun 2]																											
76	✓	LOAD BEARING MASONRY WALLS	work period extended due to 68 davisville issues	Mon 1/6/20	Wed 5/27/20	103 days	[Gantt bar from Jan 6 to May 27]																											
77	✓	STRUCTURAL STEEL FOR PRECAST & STEEL FOR LOW ROOFS	work period extended due to 68 davisville issues	Mon 1/6/20	Fri 1/24/20	15 days	[Gantt bar from Jan 6 to Jan 24]																											
78	✓	PRECAST SLABS - 3rd flr	work period extended due to 68 davisville issues	Mon 2/24/20	Mon 3/2/20	6 days	[Gantt bar from Feb 24 to Mar 2]																											
79	✓	PRECAST STAIRS	work period extended due to 68 davisville issues	Mon 2/24/20	Wed 3/4/20	8 days	[Gantt bar from Feb 24 to Mar 4]																											
80	✓	PRECAST GROUTING	work period extended due to 68 davisville issues	Mon 2/24/20	Tue 3/10/20	12 days	[Gantt bar from Feb 24 to Mar 10]																											
81	✓	PRECAST SLABS TOPPING - 2nd flr	work period extended due to 68 davisville issues	Wed 4/1/20	Tue 4/7/20	5 days	[Gantt bar from Apr 1 to Apr 7]																											
82	✓	NON LOAD BEARING MASONRY WALLS	work period extended due to 68 davisville issues	Thu 4/9/20	Fri 7/10/20	67 days	[Gantt bar from Apr 9 to Jul 10]																											
83	✓	MECHANICAL / ELECTRICAL ROUGH-INS	work period extended due to 68 davisville issues	Mon 1/6/20	Fri 7/17/20	140 days	[Gantt bar from Jan 6 to Jul 17]																											
84	✓	SPRINKLER ROUGHINS	work period extended due to 68 davisville issues	Mon 1/6/20	Fri 7/17/20	140 days	[Gantt bar from Jan 6 to Jul 17]																											
85	✓	HVAC ROUGH INS	work period extended due to 68 davisville issues	Mon 1/6/20	Fri 7/17/20	140 days	[Gantt bar from Jan 6 to Jul 17]																											
86	✓	STRUCTURAL STEEL EMBEDDED ITEMS FOR GUARD RAILS AT GREEN ROOF	work period extended due to 68 davisville issues	Mon 7/6/20	Mon 8/17/20	31 days	[Gantt bar from Jul 6 to Aug 17]																											
87	✓	FORM & POUR GREEN ROOF PLANTERS	work period extended due to 68 davisville issues	Mon 8/17/20	Mon 9/28/20	31 days	[Gantt bar from Aug 17 to Sep 28]																											
88	✓	FORM AND POUR CAST IN PLACE RAMPS	work period extended due to 68 davisville issues	Mon 8/17/20	Wed 10/28/20	53 days	[Gantt bar from Aug 17 to Oct 28]																											
89	☒	THIRD FLOOR		Mon 2/24/20	Thu 10/15/20	169 days	[Summary bar from Feb 24 to Oct 15]																											
90	✓	LOAD BEARING MASONRY WALLS		Mon 2/24/20	Thu 4/9/20	34 days	[Gantt bar from Feb 24 to Apr 9]																											
91	✓	STRUCTURAL STEEL FOR ROOF PRECAST		Thu 5/21/20	Thu 5/21/20	1 day	[Gantt bar at May 21]																											
92	✓	PRECAST SLABS - roof slab		Mon 5/25/20	Mon 5/25/20	1 day	[Gantt bar at May 25]																											
93	✓	PRECAST STAIRS		Thu 3/5/20	Thu 3/5/20	0 days	[Gantt bar at Mar 5]																											
94	✓	PRECAST GROUTING		Mon 5/25/20	Mon 5/25/20	1 day	[Gantt bar at May 25]																											
95	✓	PRECAST SLABS TOPPING - 3rd flr		Mon 5/25/20	Fri 5/29/20	5 days	[Gantt bar from May 25 to May 29]																											
96	✓	NON LOAD BEARING MASONRY WALLS		Fri 5/29/20	Fri 9/25/20	86 days	[Gantt bar from May 29 to Sep 25]																											
97	✓	MECHANICAL / ELECTRICAL ROUGH-INS		Fri 5/29/20	Thu 10/15/20	100 days	[Gantt bar from May 29 to Oct 15]																											
98	✓	SPRINKLER ROUGHINS		Fri 5/29/20	Thu 10/15/20	100 days	[Gantt bar from May 29 to Oct 15]																											
99	✓	HVAC ROUGH INS		Fri 5/29/20	Thu 10/15/20	100 days	[Gantt bar from May 29 to Oct 15]																											
100	✓	STRUCTURAL STEEL EMBEDDED ITEMS FOR GUARD RAILS AT GREEN ROOF		Mon 7/6/20	Mon 8/17/20	31 days	[Gantt bar from Jul 6 to Aug 17]																											
101	✓	FORM & POUR GREEN ROOF CONCRETE CURBS		Mon 8/17/20	Fri 9/4/20	15 days	[Gantt bar from Aug 17 to Sep 4]																											
102	☒	ROOF		Tue 5/19/20	Fri 8/28/20	74 days	[Summary bar from May 19 to Aug 28]																											
103	✓	steel decking		Tue 5/19/20	Tue 6/9/20	16 days	[Gantt bar from May 19 to Jun 9]																											
104	✓	PRECAST SLABS TOPPING - roof slab		Mon 6/1/20	Fri 7/3/20	25 days	[Gantt bar from Jun 1 to Jul 3]																											
105	✓	MASONRY PARRAPET LOW ROOFS		Wed 6/3/20	Tue 7/7/20	25 days	[Gantt bar from Jun 3 to Jul 7]																											

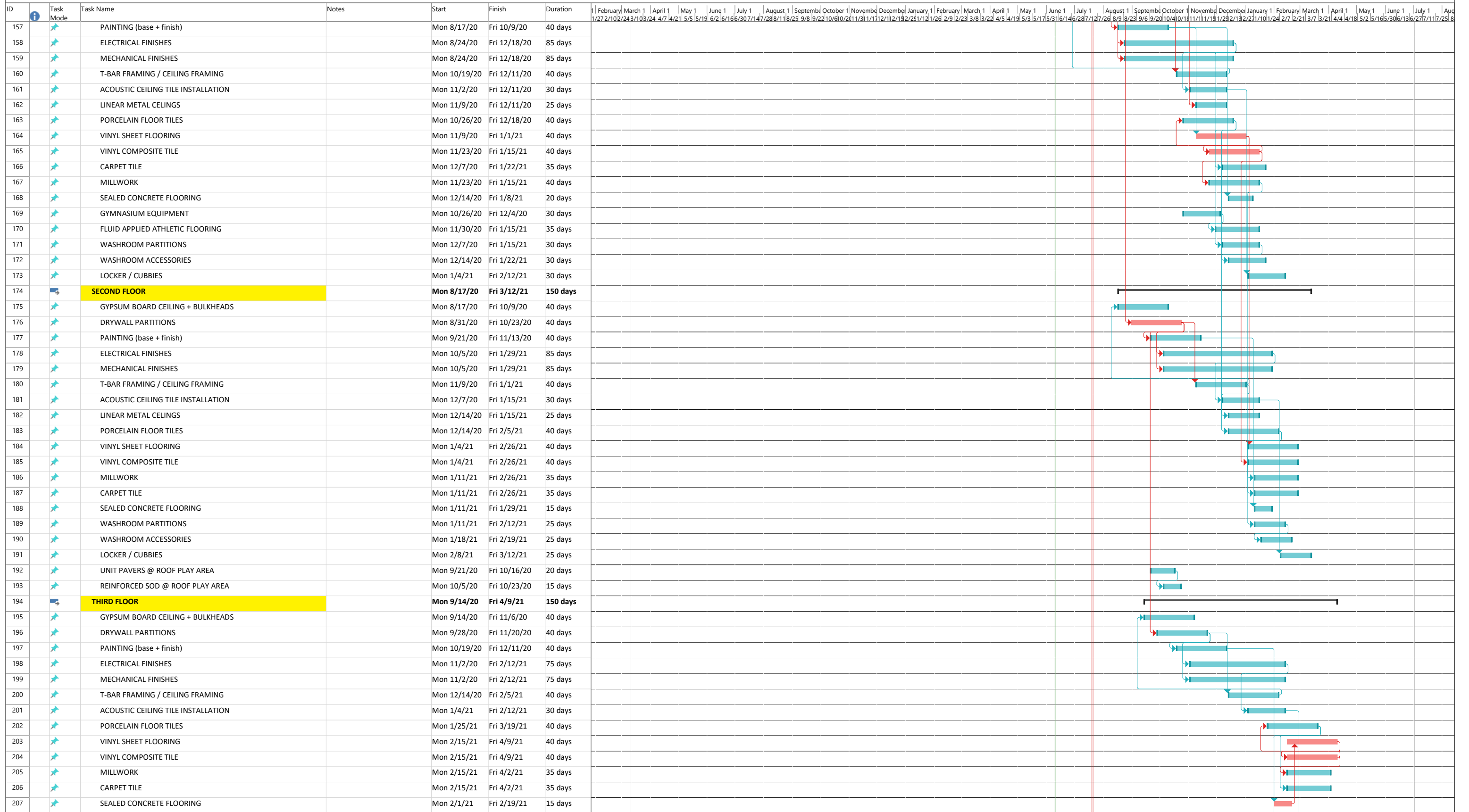
Project: Redevelopment of Dav Date: Wed 6/10/20

Task	Summary	Inactive Milestone	Duration-only	Start-only	External Milestone	Critical Split
Split	Project Summary	Inactive Summary	Manual Summary Rollup	Finish-only	Deadline	Progress
Milestone	Inactive Task	Manual Task	Manual Summary	External Tasks	Critical	Manual Progress

ID	Task Mode	Task Name	Notes	Start	Finish	Duration	Gantt Chart (Timeline from Feb 2020 to Aug 2021)																											
106	Task	MASONRY PARRAPET HIGH ROOFS		Fri 6/19/20	Thu 7/23/20	25 days	[Gantt bar: Fri 6/19/20 to Thu 7/23/20]																											
107	Task	STEEL FRAMING AT PARRAPETS LOW ROOF		Mon 7/6/20	Fri 7/24/20	15 days	[Gantt bar: Mon 7/6/20 to Fri 7/24/20]																											
108	Task	STEEL FRAMING AT PARRAPETS HIGH ROOF		Mon 7/27/20	Fri 8/14/20	15 days	[Gantt bar: Mon 7/27/20 to Fri 8/14/20]																											
109	Task	LIGHT GAGE STEEL STUD PARAPPETS LOW ROOF		Mon 7/13/20	Fri 8/7/20	20 days	[Gantt bar: Mon 7/13/20 to Fri 8/7/20]																											
110	Task	LIGHT GAGE STEEL STUD PARAPPETS HIGH ROOF		Mon 7/27/20	Fri 8/21/20	20 days	[Gantt bar: Mon 7/27/20 to Fri 8/21/20]																											
111	Task	ELEVATOR SHAFT WALLS		Mon 7/27/20	Fri 8/7/20	10 days	[Gantt bar: Mon 7/27/20 to Fri 8/7/20]																											
112	Task	ROOF TYPE R4 & R3		Mon 7/6/20	Fri 8/28/20	40 days	[Gantt bar: Mon 7/6/20 to Fri 8/28/20]																											
113	Task	ROOF TYPE R1 & R2		Mon 7/6/20	Fri 8/28/20	40 days	[Gantt bar: Mon 7/6/20 to Fri 8/28/20]																											
114	Task	RTU INSTALL		Mon 8/3/20	Fri 8/7/20	5 days	[Gantt bar: Mon 8/3/20 to Fri 8/7/20]																											
115	Summary	BUILDING ENVELOPE		Mon 7/13/20	Fri 12/4/20	105 days	[Summary bar: Mon 7/13/20 to Fri 12/4/20]																											
116	Summary	SOUTH ELEVATION		Mon 7/13/20	Fri 10/9/20	65 days	[Summary bar: Mon 7/13/20 to Fri 10/9/20]																											
117	Task	CURTAIN WALL / ALUMINUM WINDOWS		Mon 7/13/20	Fri 8/7/20	20 days	[Gantt bar: Mon 7/13/20 to Fri 8/7/20]																											
118	Task	SPRAY FOAM INSULATION		Mon 7/20/20	Fri 8/7/20	15 days	[Gantt bar: Mon 7/20/20 to Fri 8/7/20]																											
119	Task	BRICK VENEER		Mon 7/27/20	Fri 9/11/20	35 days	[Gantt bar: Mon 7/27/20 to Fri 9/11/20]																											
120	Task	METAL WALL PANEL		Mon 8/3/20	Fri 8/28/20	20 days	[Gantt bar: Mon 8/3/20 to Fri 8/28/20]																											
121	Task	ALUMINUM COMPOSITE PANEL		Mon 8/17/20	Fri 9/11/20	20 days	[Gantt bar: Mon 8/17/20 to Fri 9/11/20]																											
122	Task	SIGHT SCREEN		Mon 9/28/20	Fri 10/9/20	10 days	[Gantt bar: Mon 9/28/20 to Fri 10/9/20]																											
123	Task	SUN CONTROL DEVICES		Mon 9/28/20	Fri 10/9/20	10 days	[Gantt bar: Mon 9/28/20 to Fri 10/9/20]																											
124	Summary	WEST ELEVATION		Mon 7/20/20	Fri 10/9/20	60 days	[Summary bar: Mon 7/20/20 to Fri 10/9/20]																											
125	Task	CURTAIN WALL / ALUMINUM WINDOWS		Mon 7/20/20	Fri 8/14/20	20 days	[Gantt bar: Mon 7/20/20 to Fri 8/14/20]																											
126	Task	SPRAY FOAM INSULATION		Mon 7/27/20	Fri 8/14/20	15 days	[Gantt bar: Mon 7/27/20 to Fri 8/14/20]																											
127	Task	BRICK VENEER		Mon 8/3/20	Fri 9/18/20	35 days	[Gantt bar: Mon 8/3/20 to Fri 9/18/20]																											
128	Task	METAL WALL PANEL		Mon 9/7/20	Fri 10/2/20	20 days	[Gantt bar: Mon 9/7/20 to Fri 10/2/20]																											
129	Task	ALUMINUM COMPOSITE PANEL		Mon 9/14/20	Fri 10/9/20	20 days	[Gantt bar: Mon 9/14/20 to Fri 10/9/20]																											
130	Task	SUN CONTROL DEVICES		Mon 9/28/20	Fri 10/9/20	10 days	[Gantt bar: Mon 9/28/20 to Fri 10/9/20]																											
131	Summary	NORTH ELEVATION		Mon 7/27/20	Fri 10/30/20	70 days	[Summary bar: Mon 7/27/20 to Fri 10/30/20]																											
132	Task	CURTAIN WALL / ALUMINUM WINDOWS		Mon 7/27/20	Fri 8/28/20	25 days	[Gantt bar: Mon 7/27/20 to Fri 8/28/20]																											
133	Task	SPRAY FOAM INSULATION		Mon 8/3/20	Fri 8/21/20	15 days	[Gantt bar: Mon 8/3/20 to Fri 8/21/20]																											
134	Task	BRICK VENEER		Mon 8/10/20	Fri 9/25/20	35 days	[Gantt bar: Mon 8/10/20 to Fri 9/25/20]																											
135	Task	ALUMINUM COMPOSITE PANEL		Mon 10/5/20	Fri 10/30/20	20 days	[Gantt bar: Mon 10/5/20 to Fri 10/30/20]																											
136	Task	METAL WALL PANEL		Mon 10/5/20	Fri 10/30/20	20 days	[Gantt bar: Mon 10/5/20 to Fri 10/30/20]																											
137	Summary	EAST ELEVATION		Mon 8/3/20	Fri 12/4/20	90 days	[Summary bar: Mon 8/3/20 to Fri 12/4/20]																											
138	Task	CURTAIN WALL / ALUMINUM WINDOWS		Mon 8/3/20	Fri 9/4/20	25 days	[Gantt bar: Mon 8/3/20 to Fri 9/4/20]																											
139	Task	SPRAY FOAM INSULATION		Mon 8/10/20	Fri 8/28/20	15 days	[Gantt bar: Mon 8/10/20 to Fri 8/28/20]																											
140	Task	BRICK VENEER		Mon 8/17/20	Fri 10/2/20	35 days	[Gantt bar: Mon 8/17/20 to Fri 10/2/20]																											
141	Task	METAL WALL PANEL		Mon 10/19/20	Fri 11/13/20	20 days	[Gantt bar: Mon 10/19/20 to Fri 11/13/20]																											
142	Task	ALUMINUM COMPOSITE PANEL		Mon 11/9/20	Fri 12/4/20	20 days	[Gantt bar: Mon 11/9/20 to Fri 12/4/20]																											
143	Task	OVER HEAD DOOR		Mon 11/23/20	Fri 12/4/20	10 days	[Gantt bar: Mon 11/23/20 to Fri 12/4/20]																											
144	Summary	FINISHES		Mon 7/6/20	Fri 4/9/21	200 days	[Summary bar: Mon 7/6/20 to Fri 4/9/21]																											
145	Summary	BASEMENT LEVEL		Mon 7/27/20	Tue 10/27/20	67 days	[Summary bar: Mon 7/27/20 to Tue 10/27/20]																											
146	Task	PAINTING		Mon 7/27/20	Fri 8/28/20	25 days	[Gantt bar: Mon 7/27/20 to Fri 8/28/20]																											
147	Task	METAL ROOF AT RAMP		Mon 8/10/20	Fri 9/4/20	20 days	[Gantt bar: Mon 8/10/20 to Fri 9/4/20]																											
148	Task	ELECTRICAL FINISHES		Mon 8/3/20	Fri 9/25/20	40 days	[Gantt bar: Mon 8/3/20 to Fri 9/25/20]																											
149	Task	MECHANICAL FINISHES		Mon 8/3/20	Fri 9/25/20	40 days	[Gantt bar: Mon 8/3/20 to Fri 9/25/20]																											
150	Task	CEILING - SEMI RIGID INSULATION W/ WHITE PLASTIC INSTALLATION		Mon 9/7/20	Fri 10/2/20	20 days	[Gantt bar: Mon 9/7/20 to Fri 10/2/20]																											
151	Task	PORCELAIN FLOOR TILES		Mon 10/5/20	Fri 10/16/20	10 days	[Gantt bar: Mon 10/5/20 to Fri 10/16/20]																											
152	Task	SEALED CONCRETE FLOORING		Mon 10/5/20	Fri 10/9/20	5 days	[Gantt bar: Mon 10/5/20 to Fri 10/9/20]																											
153	Task	BIKE STORAGE ENCLOSURE		Mon 10/26/20	Tue 10/27/20	2 days	[Gantt bar: Mon 10/26/20 to Tue 10/27/20]																											
154	Summary	GROUND FLOOR		Mon 7/6/20	Fri 2/12/21	160 days	[Summary bar: Mon 7/6/20 to Fri 2/12/21]																											
155	Task	GYPSUM BOARD CEILING + BULKHEADS		Mon 7/6/20	Fri 8/28/20	40 days	[Gantt bar: Mon 7/6/20 to Fri 8/28/20]																											
156	Task	DRYWALL PARTITIONS		Mon 7/27/20	Fri 9/18/20	40 days	[Gantt bar: Mon 7/27/20 to Fri 9/18/20]																											

Project: Redevelopment of Dav Date: Wed 6/10/20

Task		Summary		Inactive Milestone		Duration-only		Start-only		External Milestone		Critical Split	
Split		Project Summary		Inactive Summary		Manual Summary Rollup		Finish-only		Deadline		Progress	
Milestone		Inactive Task		Manual Task		Manual Summary		External Tasks		Critical		Manual Progress	



Project: Redevelopment of Dav Date: Wed 6/10/20

Task		Summary		Inactive Milestone		Duration-only		Start-only		External Milestone		Critical Split	
Split		Project Summary		Inactive Summary		Manual Summary Rollup		Finish-only		Deadline		Progress	
Milestone		Inactive Task		Manual Task		Manual Summary		External Tasks		Critical		Manual Progress	

ID	Task Mode	Task Name	Notes	Start	Finish	Duration	Gantt Chart (Timeline from Feb 2020 to Aug 2021)																											
208	✈	WASHROOM PARTITIONS		Mon 2/8/21	Fri 3/12/21	25 days	[Gantt bar: Feb 8 - Mar 6, 2021]																											
209	✈	WASHROOM ACCESSORIES		Mon 2/8/21	Fri 3/12/21	25 days	[Gantt bar: Feb 8 - Mar 6, 2021]																											
210	✈	LOCKERS / CUBBIES		Mon 3/1/21	Fri 4/2/21	25 days	[Gantt bar: Mar 1 - Mar 31, 2021]																											
211	✈	UNIT PAVERS @ ROOF PLAY AREA		Mon 10/5/20	Fri 10/30/20	20 days	[Gantt bar: Oct 5 - Oct 25, 2020]																											
212	✈	REINFORCED SOD @ ROOF PLAY AREA		Mon 10/12/20	Fri 10/30/20	15 days	[Gantt bar: Oct 12 - Oct 27, 2020]																											
213	✈	WOOD STAGE CONSTRUCTION @ ROOF PLAY AREA		Mon 10/19/20	Fri 11/6/20	15 days	[Gantt bar: Oct 19 - Nov 4, 2020]																											
214	✈	EXTERIOR FURNISHINGS @ ROOF PLAY AREA (BENCHES, TIRES, PLANTERS, DIP BENCH)		Mon 10/26/20	Fri 11/13/20	15 days	[Gantt bar: Oct 26 - Nov 10, 2020]																											
215	✈	ELEVATOR INSTALL		Mon 10/5/20	Fri 11/27/20	40 days	[Gantt bar: Oct 5 - Nov 27, 2020]																											
216	✈	EXTERIOR SITE WORKS		Wed 4/1/20	Fri 11/20/20	168 days	[Gantt bar: Apr 1 - Nov 20, 2020]																											
217	✈	DAVISVILLE AVENUE / MILLWOOD ROAD		Wed 4/1/20	Fri 11/20/20	168 days	[Gantt bar: Apr 1 - Nov 20, 2020]																											
218	✓ ✈	STORM SEWER		Wed 4/1/20	Fri 5/22/20	38 days	[Gantt bar: Apr 1 - May 22, 2020]																											
219	✓ ✈	SANITARY SEWER		Wed 4/1/20	Thu 4/30/20	22 days	[Gantt bar: Apr 1 - Apr 30, 2020]																											
220	✓ ✈	WATERMAIN		Wed 4/1/20	Fri 4/17/20	13 days	[Gantt bar: Apr 1 - Apr 17, 2020]																											
221	✈	MANHOLE + CATCH BASINS		Wed 4/1/20	Fri 6/19/20	58 days	[Gantt bar: Apr 1 - Jun 19, 2020]																											
222	✈	WATERPROOFING U/S PAVING AREAS		Mon 7/27/20	Fri 8/14/20	15 days	[Gantt bar: Jul 27 - Aug 14, 2020]																											
223	✈	PERFORATED SUBDRAIN INSTALLATION FOR TURF FIELD		Mon 8/10/20	Fri 8/28/20	15 days	[Gantt bar: Aug 10 - Aug 28, 2020]																											
224	✈	ARTIFICIAL TURF INSTALLATION		Mon 10/5/20	Fri 10/16/20	10 days	[Gantt bar: Oct 5 - Oct 16, 2020]																											
225	✈	CONCRETE CURBS		Mon 8/24/20	Fri 9/4/20	10 days	[Gantt bar: Aug 24 - Sep 4, 2020]																											
226	✈	CONCRETE SIDEWALK PAVING		Mon 9/7/20	Fri 9/18/20	10 days	[Gantt bar: Sep 7 - Sep 18, 2020]																											
227	✈	PLANTER CURBS		Mon 9/21/20	Fri 10/2/20	10 days	[Gantt bar: Sep 21 - Oct 2, 2020]																											
228	✈	PERFORATED SUBDRAIN INSTALLATION FOR LANDSCAPE		Mon 9/28/20	Fri 10/2/20	5 days	[Gantt bar: Sep 28 - Oct 3, 2020]																											
229	✈	SAND PIT INSTALLATIONS - LONG JUMP / PLAY AREAS		Mon 10/5/20	Fri 10/9/20	5 days	[Gantt bar: Oct 5 - Oct 9, 2020]																											
230	✈	ASPHALT PAVING (base coat)		Mon 9/28/20	Fri 10/9/20	10 days	[Gantt bar: Sep 28 - Oct 9, 2020]																											
231	✈	ASPHALT PAVING ON CONCL SLAB (base coat)		Mon 10/12/20	Fri 10/23/20	10 days	[Gantt bar: Oct 12 - Oct 23, 2020]																											
232	✈	BASKETBALL COURT ASPHALT PAVING		Mon 10/26/20	Fri 10/30/20	5 days	[Gantt bar: Oct 26 - Oct 30, 2020]																											
233	✈	LONG JUMP ASPHALT PAVING		Mon 11/2/20	Fri 11/6/20	5 days	[Gantt bar: Nov 2 - Nov 6, 2020]																											
234	✈	ASPHALT PAVING (final coat all areas)		Mon 11/9/20	Fri 11/13/20	5 days	[Gantt bar: Nov 9 - Nov 13, 2020]																											
235	✈	LINE PAINTINGS		Mon 11/16/20	Fri 11/20/20	5 days	[Gantt bar: Nov 16 - Nov 20, 2020]																											
236	✈	FENCE INSTALLATION		Mon 9/21/20	Fri 10/9/20	15 days	[Gantt bar: Sep 21 - Oct 9, 2020]																											
237	✈	TOPSOIL		Mon 10/5/20	Fri 10/16/20	10 days	[Gantt bar: Oct 5 - Oct 16, 2020]																											
238	✈	PLANTING		Mon 10/12/20	Fri 10/23/20	10 days	[Gantt bar: Oct 12 - Oct 23, 2020]																											
239	✈	SODDING		Mon 10/26/20	Fri 10/30/20	5 days	[Gantt bar: Oct 26 - Oct 30, 2020]																											
240	✈	REINFORCED SOD @ EXTERIOR PLAY AREAS		Mon 11/2/20	Fri 11/6/20	5 days	[Gantt bar: Nov 2 - Nov 6, 2020]																											
241	✈	WOOD CURBS / FURNITURE		Mon 11/2/20	Fri 11/6/20	5 days	[Gantt bar: Nov 2 - Nov 6, 2020]																											
242	✈																																	
243	✈	CONSULTANT DEFICIENCY REVIEWS		Mon 2/1/21	Fri 2/26/21	20 days	[Gantt bar: Feb 1 - Feb 26, 2021]																											
244	✈	DEFICIENCY CORRECTION		Mon 3/1/21	Fri 6/11/21	75 days	[Gantt bar: Mar 1 - Jun 11, 2021]																											
245	✈	CONSULTANT DEFICIENCY RE-REVIEW / SIGN-OFF		Mon 5/3/21	Fri 5/28/21	20 days	[Gantt bar: May 3 - May 28, 2021]																											
246	✈	VERIFICATION + COMMISSIONING + BALANCING		Mon 3/1/21	Fri 6/11/21	75 days	[Gantt bar: Mar 1 - Jun 11, 2021]																											
247	✈	CONSTRUCTION CLEAN		Mon 5/24/21	Fri 6/11/21	15 days	[Gantt bar: May 24 - Jun 11, 2021]																											
248	✈	CONSULTANT OCCUPANCY REVIEWS		Mon 6/14/21	Fri 6/18/21	5 days	[Gantt bar: Jun 14 - Jun 18, 2021]																											
249	✈	OCCUPANCY		Mon 6/28/21	Mon 6/28/21	1 day	[Gantt bar: Jun 28, 2021]																											
250	✈	SUBSTANTIAL		Thu 7/1/21	Thu 7/1/21	1 day	[Gantt bar: Jul 1, 2021]																											

Project: Redevelopment of Dav Date: Wed 6/10/20

Task		Summary		Inactive Milestone		Duration-only		Start-only		External Milestone		Critical Split	
Split		Project Summary		Inactive Summary		Manual Summary Rollup		Finish-only		Deadline		Progress	
Milestone		Inactive Task		Manual Task		Manual Summary		External Tasks		Critical		Manual Progress	